



MEMBERSHIP PROSPECTUS 2017-18

Connect ■ Grow ■ Promote



TOWNSVILLE



CHARTERS TOWERS



HINCHINBROOK



PALM ISLAND



BURDEKIN

Welcome to Townsville Enterprise

Townsville Enterprise exists to connect, grow
and promote Townsville North Queensland.

For over 25 years Townsville Enterprise has been a key driver in attracting major investment to the region. It ensures that Townsville, Magnetic Island, Palm Island, the Burdekin Shire, the Hinchinbrook Shire and the Charters Towers region benefit from investment and economic prosperity, tourism opportunities and the business events market.



Principal Partner

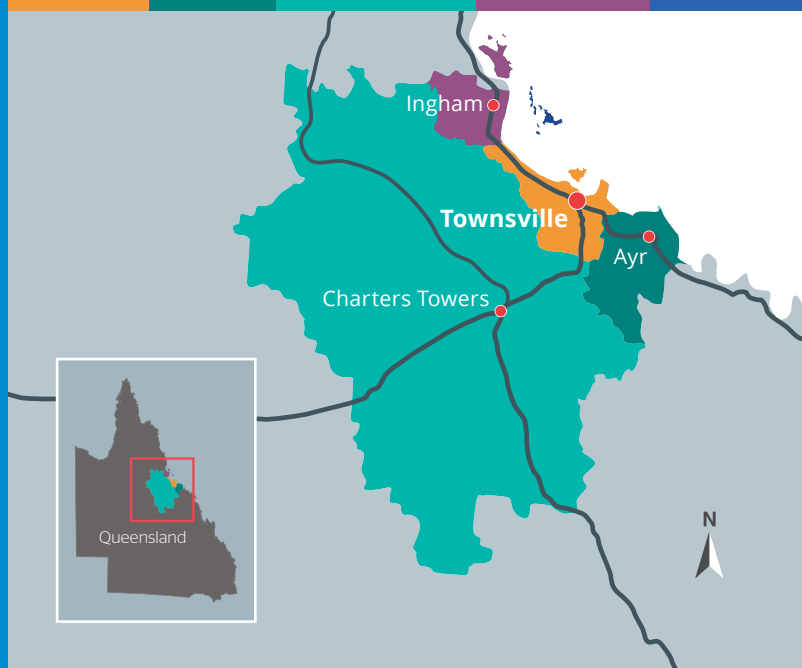


Major Partner

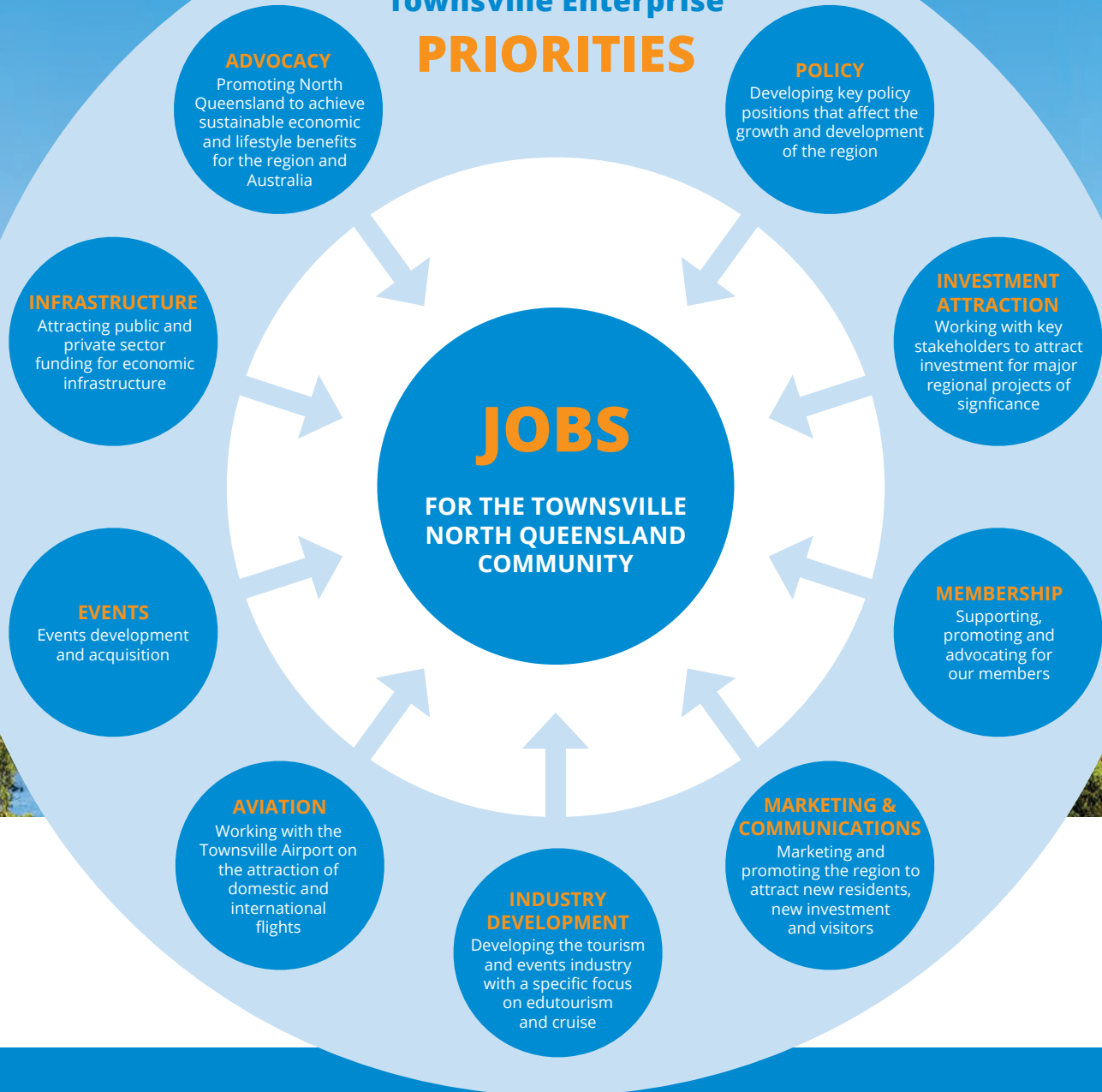


Townsville North Queensland

Townsville Burdekin Charters Towers Hinchinbrook Palm Island



Townsville Enterprise PRIORITIES



Why get involved?

Townsville Enterprise may be leading the charge, but it cannot operate alone. It is only with the support of its partners and members that it can continue to drive this growth.

Townsville Enterprise invites you to become a member to ensure your business is supported by strategic activities that attract investment, create jobs, improve livability and increase visitation.



Get in touch today

Phone: +61 7 4726 2728

Email: tel@tel.com.au

townsvilleenterprise.com.au

2017-18 Membership Levels

INTRODUCTORY

MARKETING & NETWORKING

STRATEGIC

ASSOCIATE* \$385	LEVEL 1** \$705	LEVEL 2 \$1,525	LEVEL 3 \$2,560	LEVEL 4 \$3,920	BRONZE \$7,490	COPPER \$12,285
---------------------	--------------------	--------------------	--------------------	--------------------	-------------------	--------------------

* Associate option is restricted to individuals and not-for-profits.

** Businesses with greater than 20 employees are ineligible for Level 1 option.

Prices include GST.

BENEFIT DESCRIPTION	MEMBERSHIP LEVEL						
Member welcome kit	■	■	■	■	■	■	■
Member website login with access to online resources	■	■	■	■	■	■	■
Access to online Regional Economic Profile	■	■	■	■	■	■	■
Listing in public online Member Directory	■	■	■	■	■	■	■
Monthly Townsville Enterprise eNewsletter	■	■	■	■	■	■	■
Invitations to Townsville Enterprise events	■	■	■	■	■	■	■
Discounted Member rate for Townsville Enterprise events and delegations	■	■	■	■	■	■	■
One discounted ATDW [†] listing and inclusion on www.townsvillenorthqueensland.com.au (if not a bookable tourism product)	■	■	■	■	■	■	■
Listing as a bookable tourism product on www.townsvillenorthqueensland.com.au via complimentary ATDW listing	■	■	■	■	■	■	■
Tourism industry newsletters and communications	■	■	■	■	■	■	■
Promotional post through 'Visit Townsville North Queensland' Facebook page (conditions apply)	■	■	■	■	■	■	■
Opportunity to promote business through inclusion in monthly Townsville Enterprise eNewsletter	■	■	■	■	■	■	■
Inclusion on the Townsville Enterprise preferred supplier list	■	■	■	■	■	■	■
Use of digital Townsville Enterprise Member logo	■	■	■	■	■	■	■
Members' products and services prioritised to event and conference delegates	■	■	■	■	■	■	■
Invitation to professional development events (additional cost)	■	■	■	■	■	■	■
Access to cooperative marketing campaigns at discounted Member rates (additional cost)	■	■	■	■	■	■	■
Opportunity to display up to two brochures at each Visitor Information Centre (VIC)	■	■	■	■	■	■	■
Voting rights at the Townsville Enterprise Annual General Meeting	■	■	■	■	■	■	■
Business noted as a priority product for media and trade familiarisations	■	■	■	■	■	■	■
Access to basic image and video library	■	■	■	■	■	■	■
Access to premium image and video library	■	■	■	■	■	■	■
Dedicated team member to offer support and advice and help maximise your membership	■	■	■	■	■	■	■
Boosted promotional post through 'Visit Townsville North Queensland' Facebook page (conditions apply)	■	■	■	■	■	■	■
Opportunity to purchase advertising space on www.townsvillenorthqueensland.com.au home page (conditions apply)	■	■	■	■	■	■	■
Membership of Convention Bureau – access to event leads	■	■	■	■	■	■	■
Opportunity to participate in Townsville Enterprise Event Bid Fund	■	■	■	■	■	■	■
Provision of introductions to media, investors and potential business partners	■	■	■	■	■	■	■
Invitation to destination marketing strategy planning session	■	■	■	■	■	■	■
Complimentary advertising space on www.townsvillenorthqueensland.com.au home page (conditions apply)	■	■	■	■	■	■	■
Opportunity to host a Townsville Enterprise networking event (additional cost)	■	■	■	■	■	■	■
Opportunity to promote business through Townsville Enterprise social media channels (conditions apply)	■	■	■	■	■	■	■
Targeted small meetings to members about business topics	■	■	■	■	■	■	■
Opportunity to be featured on www.townsvilleenterprise.com.au home page (conditions apply)	■	■	■	■	■	■	■
Premium listing in public online Member Directory	■	■	■	■	■	■	■
Opportunity to host 'member to member' round tables	■	■	■	■	■	■	■
Opportunity to request tailored economic development reports and data	■	■	■	■	■	■	■
Opportunity to be a key spokesperson/industry expert on various media issues	■	■	■	■	■	■	■
Where applicable, eligibility to present to national/international investors and government	■	■	■	■	■	■	■
Company listed in Townsville Enterprise's major corporate publications	■	■	■	■	■	■	■
A Level 2 Membership for associated business/client	■	■	■	■	■	■	■
Chair/CEO Round Table meetings	■	■	■	■	■	■	■
Opportunity to present to key staff to enhance product knowledge and grow business networks	■	■	■	■	■	■	■
Assistance with media coverage via provision of Media Contact List and media templates	■	■	■	■	■	■	■
Opportunity to promote business via a dedicated email to Townsville Enterprise membership database (conditions apply)	■	■	■	■	■	■	■
Where applicable, use of Townsville Enterprise as spokesperson for media events	■	■	■	■	■	■	■
One tailored REMPLAN economic analysis based on business requirements (on request)	■	■	■	■	■	■	■

[†] Australian Tourism Data Warehouse